

# HYATT REGENCY VANCOUVER

655 Burrard Street  
Vancouver, BC, Canada V6C 2R7

T +1 604 683 1234

F +1 604 689 3707

vancouver.hyatt.com



## CAPACITY CHART



Room Name	Room Dimensions L x W x H	Room Size Sq. Ft.	Banquet	Reception	Theatre	Classroom	Boardroom	U-Shape	Hollow Square	Exhibit
<b>Plaza Level (Second Floor)</b>										
PLAZA BALLROOM	95' x 47' x 12'	4,465	400	450	475	250	—	—	—	40
Plaza A & B or B & C	65' x 47' x 12'	3,055	280	300	300	150	55	50	70	28
Plaza A	30' x 47' x 12'	1,410	120	140	150	80	32	36	52	12
Plaza B	35' x 47' x 12'	1,645	160	160	175	90	32	36	54	12
Plaza C	30' x 47' x 12'	1,410	120	140	150	80	32	36	52	12
GEORGIA BALLROOM	79' x 47' x 12'	3,713	280	350	420	150	55	44	50	29
Georgia A	33' x 47' x 12'	1,551	110	150	180	60	30	22	28	11
Georgia B	46' x 47' x 12'	2,162	150	200	240	84	30	22	28	15

## Convention Level (Third Floor)

REGENCY BALLROOM	170' x 82' x 18'	13,940	1,360	1,170	1,650	850	—	—	—	130
Regency A	43' x 41' x 18'	1,763	160	145	200	100	38	30	36	16
Regency B	43' x 41' x 18'	1,763	160	145	200	100	38	30	36	16
Regency C	42' x 82' x 18'	3,444	320	300	400	224	—	57	36	32
Regency D	42' x 82' x 18'	3,444	320	300	400	224	—	57	36	32
Regency E	43' x 41' x 18'	1,763	160	140	200	100	38	30	36	16
Regency F	43' x 41' x 18'	1,763	160	140	200	100	38	30	36	16
Regency A & B	43' x 82' x 18'	3,526	320	290	400	200	—	57	—	32
Regency A, B & C	85' x 82' x 18'	6,970	640	590	825	400	—	—	96	64
Regency C & D	84' x 82' x 18'	6,888	640	600	825	400	—	—	—	64
Regency A, B, C & D	127' x 82' x 18'	10,414	960	890	1,200	620	—	—	—	96
Regency C, D, E & F	127' x 82' x 18'	10,414	960	880	1,200	620	—	—	—	96
Regency D, E & F	85' x 82' x 18'	6,970	640	580	825	400	—	—	96	64
Regency E & F	43' x 82' x 18'	3,526	320	280	400	200	—	57	66	32
Regency Foyer	—	—	—	—	—	—	—	—	—	—
QUEEN CHARLOTTE	24' x 16' x 10'	385	—	—	—	—	—	—	—	—
KING GEORGE	13' x 15' x 10'	195	—	—	15	6	8	—	—	—
PRINCE OF WALES	41' x 32' x 10'	1,300	80	90	100	60	30	30	36	—
OXFORD	23' x 32' x 10'	730	50	65	50	35	20	16	20	—
WINDSOR	20' x 26' x 10'	520	40	45	40	12	20	16	20	—
BALMORAL	62' x 26' x 10'	1,610	90	125	140	75	32	36	50	—

## Fourth Floor

CAVENDISH	27' x 26' x 8'	700	40	45	25	12	20	—	—	—
TENNYSON	27' x 26' x 8'	700	40	50	25	12	20	—	—	—
DOVER	27' x 21' x 8'	560	40	45	25	12	20	—	—	—
TURNER	42' x 33' x 7'	1,380	—	60	—	—	16	—	—	—
LORD BYRON	24' x 28' x 8'	675	40	45	25	12	20	—	—	—
CONSTABLE	24' x 28' x 8'	675	40	40	25	12	20	—	—	—
KENSINGTON	24' x 28' x 8'	675	40	45	25	12	20	—	—	—
BRIGHTON	24' x 28' x 8'	675	40	45	25	12	20	—	—	—

## Perspectives Level (34th Floor)

PERSPECTIVES TOTAL	—	6,300	460	550	—	—	—	—	—	—
CYPRESS (W)	25' x 46' x 11'	1,150	70	100	75	45	28	22	26	—
STANLEY (W)	23' x 46' x 11'	1,150	60	75	75	40	30	24	32	—
GROUSE (N)	32' x 44' x 11'	1,440	110	125	125	50	30	24	30	—
SEYMOUR (N)	39' x 28' x 11'	1,090	70	80	75	40	30	24	30	—
ENGLISH BAY (S)	35' x 42' x 10'	1,470	140	170	125	50	30	24	30	—

**HYATT REGENCY VANCOUVER**

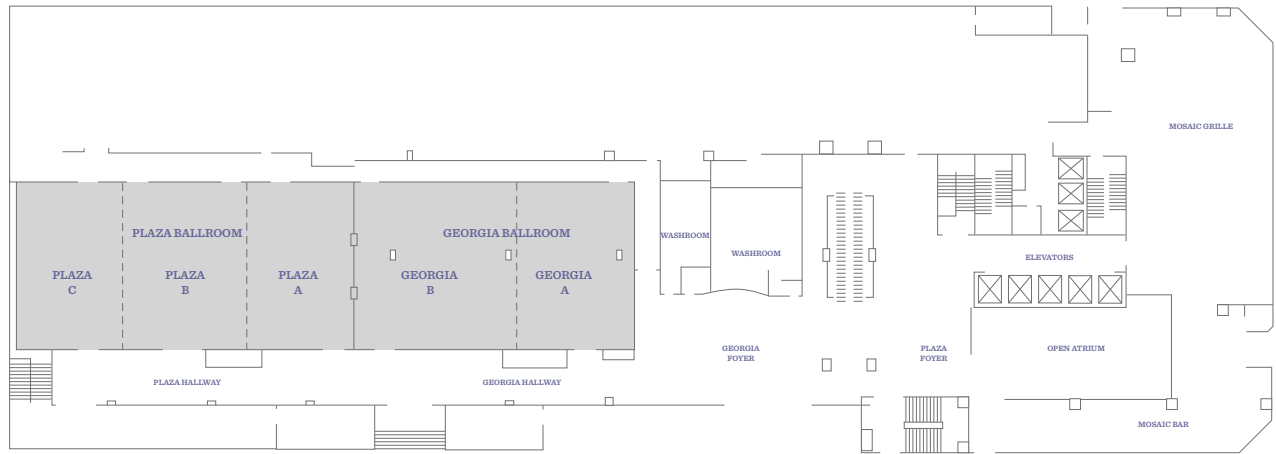
655 Burrard Street  
Vancouver, BC, Canada V6C 2R7

T +1 604 683 1234  
F +1 604 689 3707  
vancouver.hyatt.com

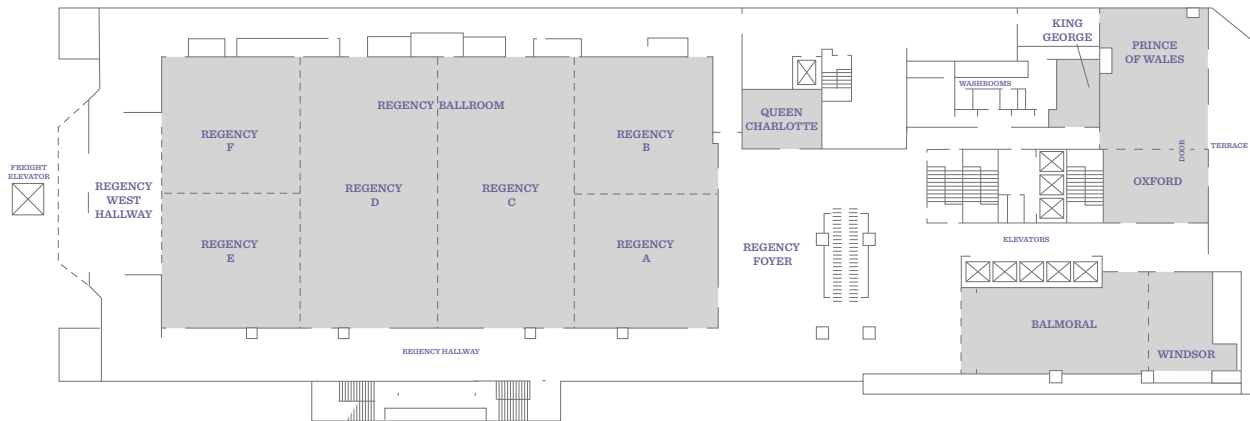


**FLOOR PLAN**

*Plaza Level (Second Floor)*



*Convention Level (Third Floor)*



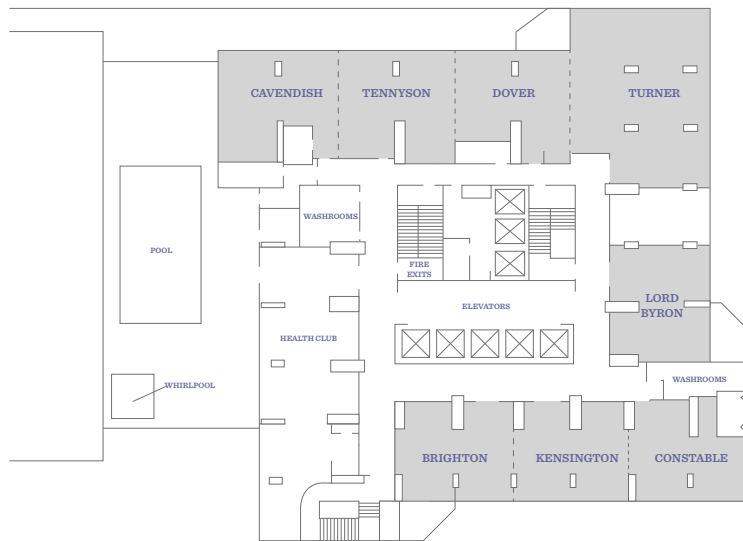
**HYATT REGENCY VANCOUVER**

655 Burrard Street  
Vancouver, BC, Canada V6C 2R7

T +1 604 683 1234  
F +1 604 689 3707  
vancouver.hyatt.com



**FLOOR PLAN**  
*Fourth Floor*



*Perspectives Level (34th Floor)*

